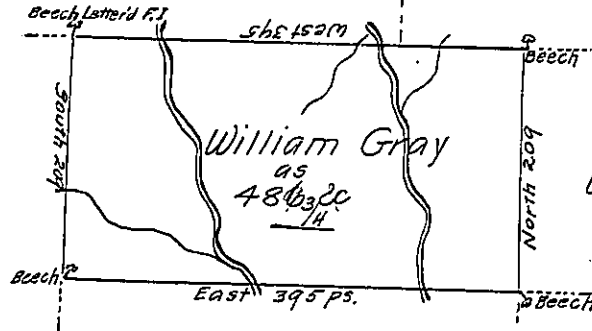


C-217-285

Zach⁹ Ferris

C-127-253

Stophel Maidaera



Wm. Sheaff
A-14-229

Joseph Gray
C-79-81

A-2-17.3

Draft of a tract of land Called _____ Situate on the waters of
 Wyalusing Creek Containing four Hundred & Eighty Six acres $\frac{3}{4}$ & allowance
 of Six pCent for roads &c. Joining Land surveyed for Stophel Maidaera & others
 in Luzerne County, Surveyed for William Gray the 19th. Day of Novr. 1789 in
 pursuance of a warrant Dated the 15th. Day of April 1788.

by

Tob. Daniel Brodhead Esqr. }
 Survr. Genl. }

Wm. Gray D.S.

IN TESTIMONY that the above is a copy of the original remaining on file in
 the Department of Internal Affairs of Pennsylvania, made
 conformably to an Act of Assembly approved the 16th day of
 February, 1833, I have hereunto set my Hand and caused
 the Seal of said Department to be affixed at Harrisburg,
 this sixth day of January 1905

Loac B. Brown
 Secretary of Internal Affairs.